

nphoto

PAPER TYPES



FUJI CRYSTAL ARCHIVE DIGITAL PAPER DPII LUSTRE



FUJI CRYSTAL ARCHIVE DIGITAL PAPER DPII GLOSSY



CANON SATIN



FUJI CRYSTAL ARCHIVE DIGITAL PAPER DPII



FELIX SCHOELLER LUSTER



CANON GLOSS



CRYSTAL ARCHIVE DIGITAL PAPER DPI LUSTRE



DIGI PURE WHITE



DPI GLOSSY



FUJI CRYSTAL ARCHIVE DIGITAL PAPER DPI PEARL



FELIX SCHOELLER LUSTER



CRYSTAL ARCHIVE DIGITAL PAPER DPI SILK



MOHAWK EGGSHELL 216 g/m²



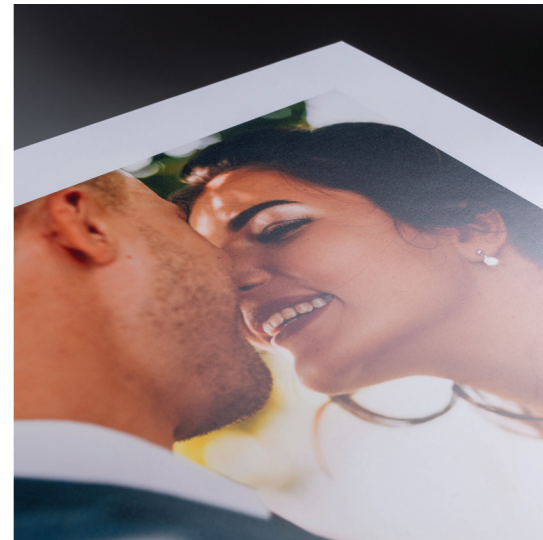
ARCTIC MATTE



MOHAWK EGGSHELL 148 g/m²

The entirety of our product lineup features a wide variety of high-quality papers, each with its own unique use cases and advantages. As the benefits of some may not be immediately clear upon just a quick glance, we've prepared this short guide to walk you through what each paper has to offer. By the time you're done reading this guide, you'll know exactly which option will best match your photography style & what your clients will enjoy the most!

FUJI SILK



A 235 g/m² soft, half-matte paper with a thick honeycomb texture, good at retaining vibrant colours for a high level of detail. Resistant to fingerprints and scratches, making it a great all-around option for just about any kind of photography.

FEATURED IN:

Photo Albums, Matted & Mounted Prints, Prints, Triplexes, Luxury Greeting Cards, HD Photo Calendars

BEST USES:

Wedding, newborn & landscape photography.

FUJI PEARL (METALLIC)



A 250 g/m² smooth and glossy paper, sure to make any photo appear sharper and more vibrant with its natural reflectivity. Due to its innately glossy characteristics, we recommend using our proofing presets to test the outcome before submitting your order or slightly lowering the contrast on the brightest areas of your photos.

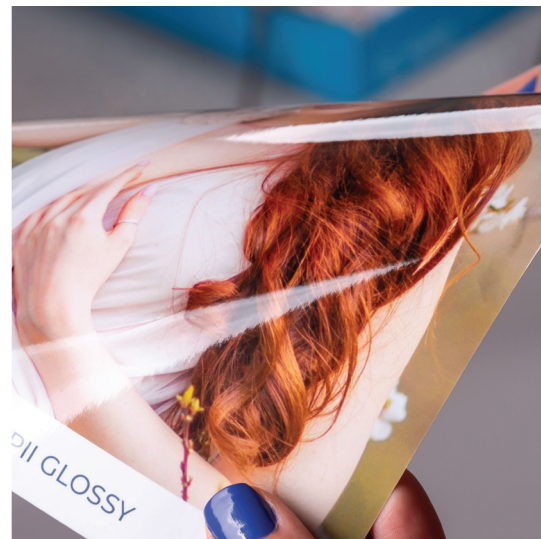
FEATURED IN:

Photo Albums, Prints

BEST USES:

Can be used on the same Photo Album alongside the Fuji Silk, allowing you to use this paper for a selection of mesmerising shots.

FUJI GLOSS



A shiny, smooth 235 g/m² paper which provides additional sharpness and colour depth to your photos.

FEATURED IN:

Prints

BEST USES:

Any photos that would benefit from a glossy paper, when prepared for prints.

FUJI LUSTRE



A 235 g/m² paper with a very fine grain-like texture, allowing it to be very resistant to fingerprints and scratches. Allows for good use of neutral colours, and tends to be less contrasting than our glossier papers.

FEATURED IN:

Prints, Lite Albums

BEST USES:

Portraits, black & white photos

CANON DEEP MATTE



A 240 g/m² matte paper that is very soft to the touch. Due to this paper's emulsion process, the Deep Matte allows for highly-detailed, rich, dark colours, adding a degree of intensity to the shadows and skin tones in your photos. Therefore, we advise against considerably increasing the contrast in your photos, or making large changes to any dark backgrounds, as they are more likely to be visible on this paper.

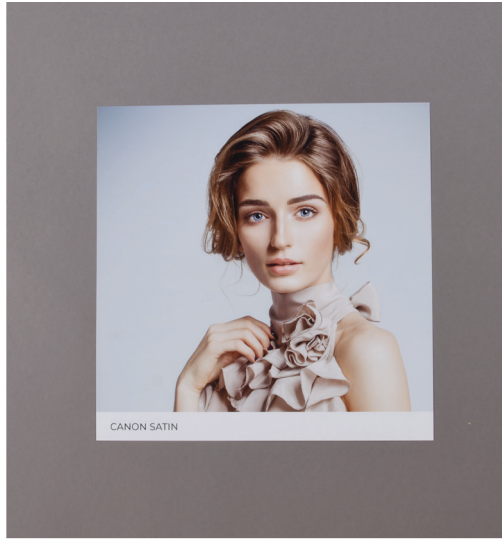
FEATURED IN:

Photo Albums, Matted Prints, DreamPrints

BEST USES:

Delicate, pastel-themed photo sessions, or whenever you intend to give your photos a professional look.

CANON SATIN



This 170g/m² paper features a smooth, grain-like texture, making it resistant to fingerprints and scratches. It has a high white ratio and absorbs light with ease, giving it realistic colours and minimal glare, and is resistant to fading.

FEATURED IN:

Dreambook 4K

BEST USES:

An excellent all-rounder for Dreambooks that are expected to be opened and viewed often.

CANON GLOSS



A 275g/m² paper characterised by its extremely smooth surface and high reflectivity, giving an impression of vibrant colours & cold greys. Rigid and highly resistant to fading. Gives extra sharpness to every detail due to its naturally high contrast.

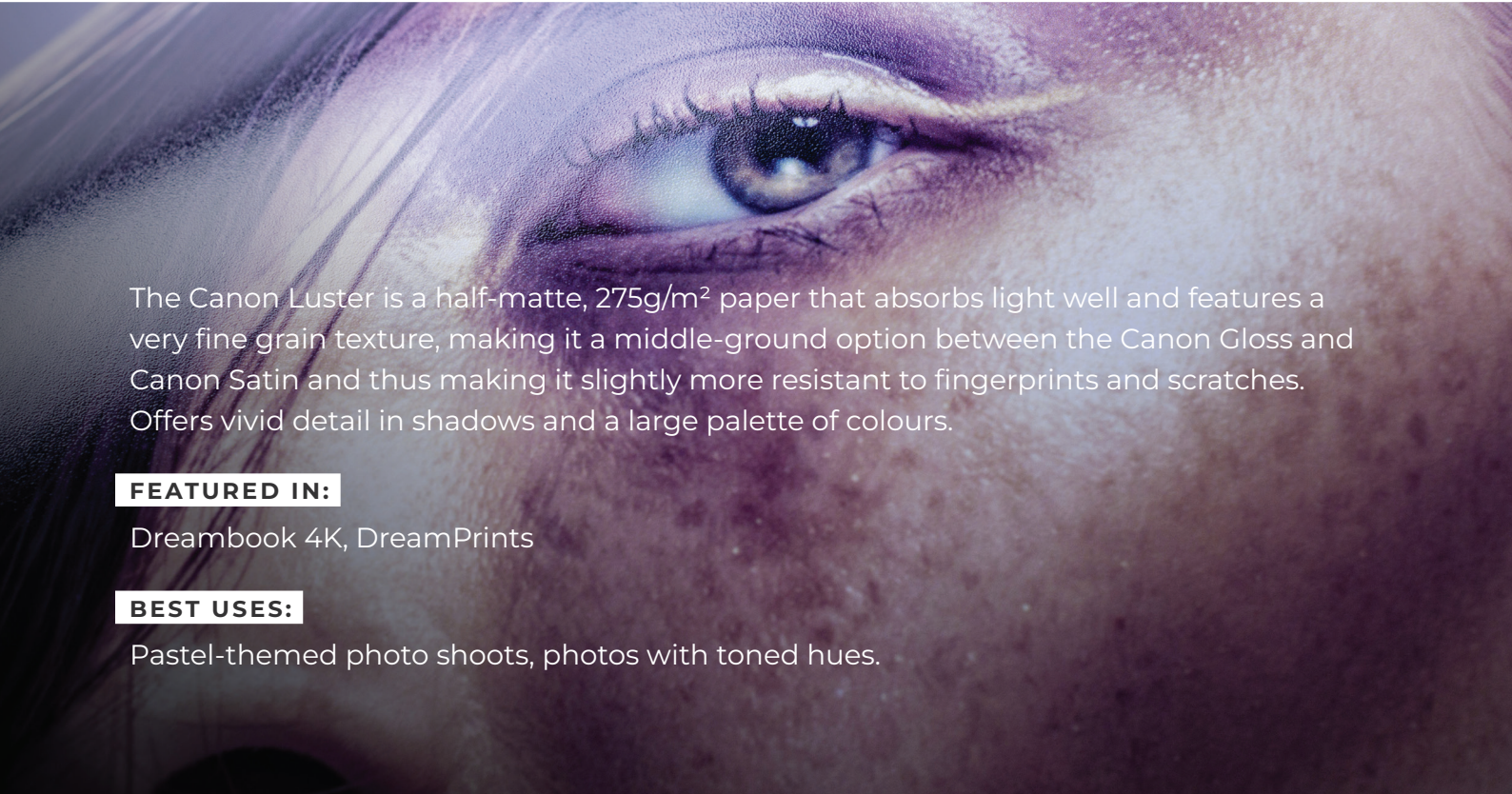
FEATURED IN:

Dreambook 4K, DreamPrints

BEST USES:

Dramatic, colour-rich photo shoots.

CANON LUSTER



The Canon Luster is a half-matte, 275g/m² paper that absorbs light well and features a very fine grain texture, making it a middle-ground option between the Canon Gloss and Canon Satin and thus making it slightly more resistant to fingerprints and scratches. Offers vivid detail in shadows and a large palette of colours.

FEATURED IN:

Dreambook 4K, DreamPrints

BEST USES:

Pastel-themed photo shoots, photos with toned hues.

MOHAWK EGGSHELL



A classic; this is a traditional, uncoated matte paper that utilises its natural paper colouring for a vintage look, by giving off slightly muted colours & an ivory tone on whites and greys. Relatively low contrast and absorbs light well.

Available in 3 grammages: 148g/m², 216g/m² and 324g/m², the thickest being exclusively available in our Art Prints.

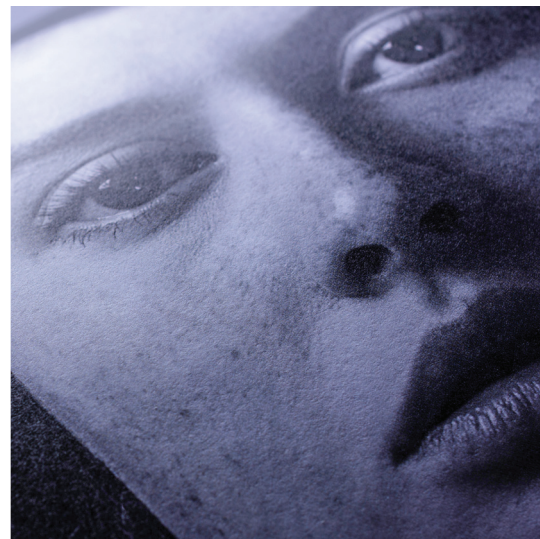
FEATURED IN:

Photo Albums, Photo Books Pro, Matted and Board Mounted Prints, Grand Gallery Photo Books, Framed Prints, Accordion Mini Books, Art Prints

BEST USES:

Professional portraits, both indoors and outdoors. Very easy to write on, making it a perfect fit for guest books.

ARCTIC MATTE



A high-tech, wood-free 170g/m² paper held in very high regard among printing and publishing industries. Features bright whites and exceptional contrast. Known for being exceptionally eco-friendly.

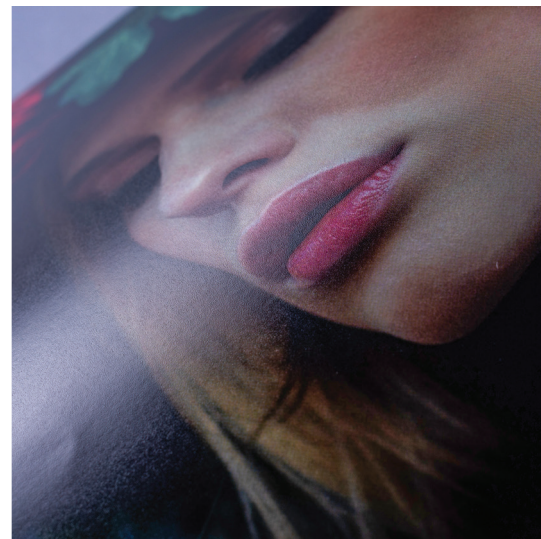
FEATURED IN:

Photo Books Pro, Grand Gallery Photo Books, Photo Calendars Pro B2

BEST USES:

Gives any style of photography a vintage, film-like mood.

FELIX SCHOELLER LUSTER



A pearly-textured 190g/m² paper bearing mild light reflection & good resistance to fingerprints and scratches, sitting in the middle between more matte and glossy papers.

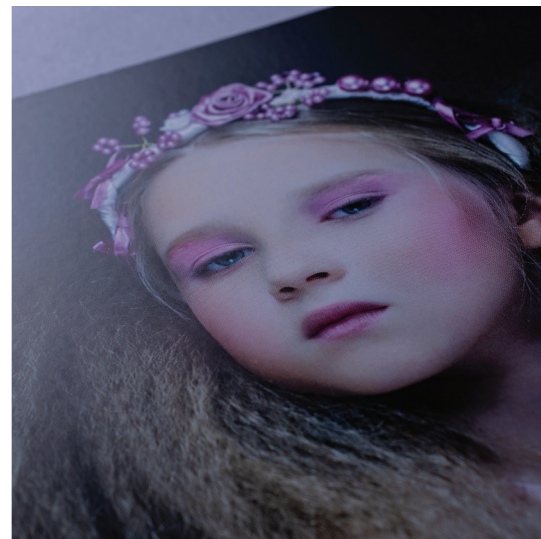
FEATURED IN:

Photo Books Pro, Grand Gallery Photo Books, Art Prints, Accordion Book

BEST USES:

A great general-purpose option suitable for products that are expected to be handled often.

DIGI PURE WHITE



A 200g/m² paper that meets the needs of the Photo Book Basic's double-sided pages. Maintains high levels of contrast and offers well-saturated colours, while maintaining very good resistance to fingerprints and scratches. Considered to be a true pure white paper.

FEATURED IN:

Photo Book Basic, Photo Calendar Basic

BEST USES:

A general option for the "Basics" product lineup.



CONTACT US

+44 (0) 20 3409 4355

+1 (631) 772 - 0030

customerservice@nphoto.com



WWW.NPHOTO.COM

TRY OUR PHYSICAL SAMPLE PAPER BUNDLE

It's one thing to view the papers on a screen, and another entirely to inspect and touch them from the convenience of your studio. This package will contain 13 premade photos, each printed on one of our unique papers to give you a live presentation of every option available. Found in the selling tools section of the nShop.